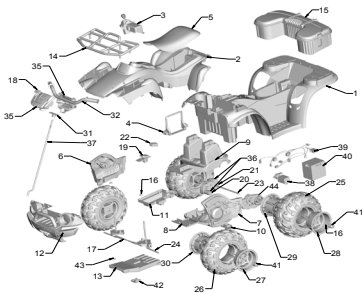


N9731

**Kawasaki Brute Force
12 VOLT ADVANCED SERIES**

Age Range:	3-7 Years
Weight Limit:	130 lbs.
Surfaces:	Ultimate Terrain
Speed:	2.5 MPH Forward/Reverse 5.0 MPH Forward
Colors:	Camo Body, Black Wheels
Intro:	2009
Suggested Retail:	\$289.99
Box Dimensions:	27.7 x 29.8 x 49.8; 67 lbs
Warranty:	One Year Vehicle Six Months Battery



Item	Part #	Description	QTY	Item	Part #	Description	QTY
1	N/A	CHASSIS	1 EA	30	N9731-2399	RIM INNER, FRONT	2 EA
2	N/A	BODY	1 EA	31	73690-4289	NECK	1 EA
3	3800-8258	SHIFTER ASSEMBLY	1 EA	32	J5248-2439	HAND GRIP	2 EA
4	3800-7809	BATTERY RETAINER	2 EA	35	N9731-9150	HANDLE BAR ASSY. FRONT/REAR	1 EA
5	B9785-2159	SEAT, UTILITY QUAD	1 EA	36	J5248-9779	MTRGRBX ASSY W/ WIRES - RIGHT	1 EA
6	B9785-2269	FALSE MOTOR, RIGHT	1 EA	37	J5248-4559	STEERING COLUMN (CAP BELOW)	1 EA
7	B9785-2279	FALSE MOTOR, LEFT	1 EA	38	00801-1480	CHARGER 12V PROBE	1 EA
8	B9785-2249	MOTOR HOUSING, BOTTOM	1 EA	39	3800-8264	HARNASS ASSY.	1 EA
9	B9785-2259	MOTOR HOUSING, UPPER	1 EA	40	00801-1460	12 V BATTERY	1 EA
10	B9785-2239	BUSHING PLATE, HITCH	1 EA	41	N9731-2549	HUBCAP CENTER	4 EA
11	B9785-2289	COVER, FOOT BOARD, LOWER	1 EA	42	J5248-2639	STEERING COLUMN CLIP	1 EA
12	J5248-2259	BRUSHGUARD	1 EA	43	00801-0196	7/16 FLAT WASHER N/A	2 EA
13	J5248-2509	BASE PLATE	1 EA	44	J5248-9789	MTRGRBX ASSY. W/ WIRES - LEFT	1 EA
14	J5248-2289	RACK FRONT	1 EA	Parts Not Shown			
15	N9731-9309	ASSEMBLY REAR STORAGE BOX	1 EA	Description			
16	0801-0226	.437 RETAINER	4 EA	00968-2915	MTRGRBX W/O WIRES	2 EA	
17	J5248-9030	STEERING LINKAGE ASSY.	1 EA	73610-2689	BUSHING .437 LONG	2 EA	
18	00801-1503	SMALL, PW-EMBLEM	1 EA	74550-2689	HANDLE BUSHING	2 EA	
19	J5248-9449	FOOTBOARD ASSY.	1 EA	0801-0318	3/8-16 NYLOK HEX NUT	4 EA	
20	00968-2705	MTR/PINION	2 EA	J5248-9279	HARDWARE BAG	1 EA	
21	00968-2807	GEARBOX	2 EA	0912-8001	8 X 3/4" SCREW	15 EA	
22	J4394-9059	BATT LIFE INDICATOR	1 EA	N9731-0320	LABEL SHEET	1 EA	
23	J5248-4509	REAR AXLE	1 EA	N9731-0920	MANUAL	1 EA	
24	J5248-4519	FRONT AXLE	2 EA	00801-0923	CONTROL SWITCH (shifter/rocker)	2 EA	
25	J5248-2359	WHEEL, REAR	2 EA	00801-1620	STEERING COLUMN CAP	1 EA	
26	J5248-2369	WHEEL, FRONT	2 EA	00801-1531	TIP/LIFT SWITCH	2 EA	
27	N9731-2379	RIM OUTER, FRONT	2 EA	00801-1566	FOOTSWITCH (plunger)	1 EA	
28	N9731-2479	RIM OUTER, REAR	2 EA				
29	N9731-2389	RIM INNER, REAR	2 EA				

11/10/2009 13:00